

CAN Capital Funding LLC Series 2014-1

Issuer: CAN Capital Funding LLC
 Servicer: CAN Capital, Inc.
 Backup Servicer: First Associates Loan Servicing, LLC
 Indenture Trustee: U.S. Bank National Association

Distribution Date: December-16
 Collection Period: November-16
 Closing Date: October-14
 Period: 26
 Payment Frequency: Monthly



Class Summary

	<u>Original Balance</u>	<u>Current Balance</u>	<u>Coupon</u>	<u>Legal Final Maturity Date</u>	<u>Original Rating</u>	<u>Current Rating</u>	<u>Original CE</u>	<u>Current CE</u>	<u>Current CE \$</u>
Class A	\$ 171,000,000	\$ 104,540,697	3.117%	October-20	A (sf)	A (sf) (URN)	15.00%	17.95%	\$ 22,645,973
Class B	\$ 20,000,000	\$ 20,000,000	4.257%	October-20	BBB (low) (sf)	BBB (low) (sf) (URN)	5.00%	2.10%	\$ 2,645,973
Total Notes	\$ 191,000,000	\$ 124,540,697							

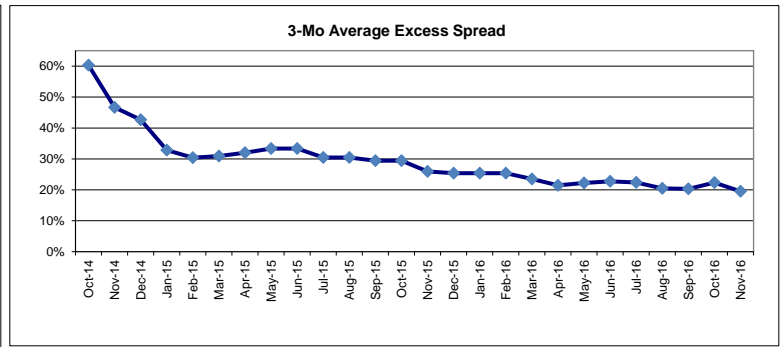
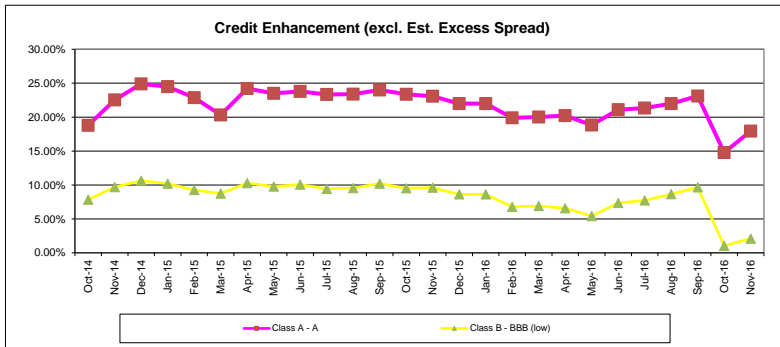
Note:

CE coverage calculation excludes excess spread

Collateral Summary

	<u>Original</u>	<u>Current</u>	<u>3 Mos. Ago</u>	<u>6 Mos. Ago</u>	<u>Credit Enhancement</u>	<u>Current \$</u>	<u>3 Mos. Ago</u>	<u>6 Mos. Ago</u>
Aggregate Principal Balance	\$ 200,014,592	\$ 126,186,669	\$ 196,976,018	\$ 192,800,077	Overcollateralization Amt	\$ 1,645,973	\$ 11,963,335	\$ 7,072,931
					Overcollateralization %	1.30%	6.07%	3.67%
					Reserve Account	\$ 1,000,000	\$ 1,000,000	\$ 1,000,000
					Reserve %	0.79%	0.51%	0.52%
					Subordination Amt	\$ 20,000,000	\$ 20,000,000	\$ 20,000,000
					Subordination %	15.85%	10.15%	10.37%

For additional PAR reports on this transaction or others please go to the following location: www.dbrs.com/PAR



Copyright © 2016, DBRS Limited, DBRS, Inc. and DBRS Ratings Limited (collectively, DBRS). All rights reserved. The information upon which DBRS ratings and reports are based is obtained by DBRS from sources DBRS believes to be accurate and reliable. DBRS does not audit the information it receives in connection with the rating process, and it does not and cannot independently verify that information in every instance. The extent of any factual investigation or independent verification depends on facts and circumstances. DBRS ratings, reports and any other information provided by DBRS are provided "as is" and without representation or warranty of any kind. DBRS hereby disclaims any representation or warranty, express or implied, as to the accuracy, timeliness, completeness, merchantability, fitness for any particular purpose or non-infringement of any of such information. In no event shall DBRS or its directors, officers, employees, independent contractors, agents and representatives (collectively, DBRS Representatives) be liable (1) for any inaccuracy, delay, loss of data, interruption in service, error or omission or for any damages resulting therefrom, or (2) for any direct, indirect, incidental, special, compensatory or consequential damages arising from any use of ratings and rating reports or arising from any error (negligent or otherwise) or other circumstance or contingency within or outside the control of DBRS or any DBRS Representative, in connection with or related to obtaining, collecting, compiling, analyzing, interpreting, communicating, publishing or delivering any such information. Ratings and other opinions issued by DBRS are, and must be construed solely as, statements of opinion and not statements of fact as to credit worthiness or recommendations to purchase, sell or hold any securities. A report providing a DBRS rating is neither a prospectus nor a substitute for the information assembled, verified and presented to investors by the issuer and its agents in connection with the sale of the securities. DBRS receives compensation for its rating activities from issuers, insurers, guarantors and/or underwriters of debt securities for assigning ratings and from subscribers to its website. DBRS is not responsible for the content or operation of third party websites accessed through hypertext or other computer links and DBRS shall have no liability to any person or entity for the use of such third party websites. This publication may not be reproduced, retransmitted or distributed in any form without the prior written consent of DBRS. ALL DBRS RATINGS ARE SUBJECT TO DISCLAIMERS AND CERTAIN LIMITATIONS. PLEASE READ THESE DISCLAIMERS AND LIMITATIONS AT <http://www.dbrs.com/about/disclaimer>. ADDITIONAL INFORMATION REGARDING DBRS RATINGS, INCLUDING DEFINITIONS, POLICIES AND METHODOLOGIES, ARE AVAILABLE ON <http://www.dbrs.com>.